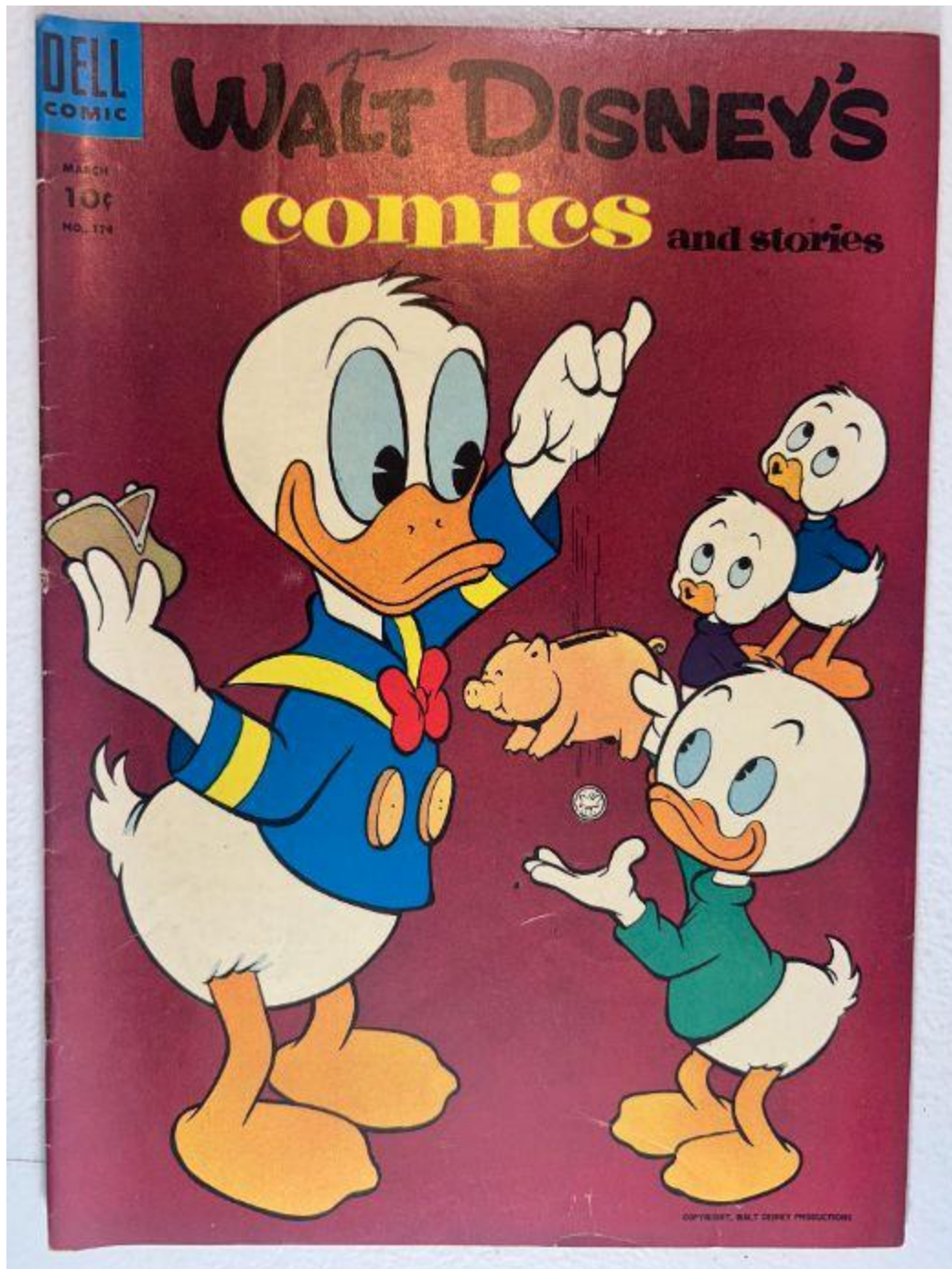


■ **Walt Disney's Comics and Stories – Vol. 15 No. 6**  
**(March 1953)**

Evaluation Date: April 3, 2026



# SUMMARY OF OBSERVATIONS

This comic retains the front cover, back cover, centerfold, and all photographed interior pages. Visual presentation is strong, with the front cover showing vivid color saturation and retained surface gloss, and the interior pages displaying clear artwork with consistent age-related toning. The spine remains straight and continuous in overall alignment.

Observed condition issues are limited and localized. The spine shows **fine vertical cracking** without long splits or separation. Both staples are present and embedded, showing **visible surface oxidation** without surrounding paper tearing or slot enlargement. Interior pages appear clean and complete, with only minor handling wear. The brittleness test image shows a **single page gently flexed**, forming a smooth, shallow arc with no visible fiber fracture on the lifted page.

---

## FRONT COVER — OBSERVATIONS

### Photo Condition & Quality:

Image is sharp and evenly lit, with the full cover visible including edges, corners, and spine. No glare or obstruction; resolution is sufficient to assess surface gloss, spine condition, and edge wear.

### Observations:

- Strong, even color saturation across the cover field.
- Surface gloss is visible, particularly in the background areas.
- Along the spine edge, **fine vertical cracks** are visible, each approximately **2–4 mm in length**, with openings **<1 mm wide**.
- No long spine splits or exposed interior layers observed.
- Edges show light handling wear; corners show rounding of approximately **3–5 mm** inward.
- **No clearly defined paper loss** is visible along the edges in this image.

### Overall Impression:

The front cover presents strongly, with **light spine cracking and minor handling wear only**.

---



## Observations:

- Uniform age toning across the back cover, slightly darker toward the outer margins.
- Paper surface appears flat, with no cockling or rippling.
- No localized stains or tide lines observed.
- Bottom and side edges show light wear affecting approximately **5–10 mm intermittently**.
- Corner rounding present, approximately **3–5 mm** inward.
- No paper loss observed.

## Overall Impression:

The back cover remains intact with **uniform toning and light handling wear**.

# INTERIOR PAGES — OBSERVATIONS

## Photo Condition & Quality:

Images are sharp and evenly lit, showing full interior pages with margins visible. No glare or cropping; resolution is sufficient to assess paper condition and edges.





### Observations:

- Interior pages exhibit **tan to light-tan paper coloration**, darker toward outer margins and lighter near gutters.
- Color remains clear and linework is crisp.
- No interior tearing or paper loss visible on the photographed pages.
- Minor corner bends visible on some pages, approximately **3–5 mm** inward.
- No writing, ink transfer, or moisture-related distortion observed.

### Overall Impression:

Interior pages are **clean, complete, and visually strong**, with only minor handling wear.

# CENTERFOLD — OBSERVATIONS

## Photo Condition & Quality:

Image is in focus and evenly lit, clearly showing both pages and the central gutter; staple areas are unobstructed.



### Observations:

- Both staple positions are visible and intact.
- Staple perforations remain close to original size, with no enlargement beyond **~1 mm**.
- Fold line shows light compression extending **~1–2 mm** on either side.
- No paper loss or tearing visible at the fold.

### Overall Impression:

The centerfold remains **securely attached and structurally sound**.

---

## SPINE — OBSERVATIONS

### Photo Condition & Quality:

Image is sharp and well lit, showing the full spine length; resolution is sufficient to assess cracking and alignment.



### Observations:

- Spine appears straight and continuous.
- Several **fine vertical cracks** visible, each approximately **2–4 mm** in length.
- No long splits, separation, or exposed interior page layers observed.

### Overall Impression:

The spine shows **light cracking only**, with good structural integrity.

# UPPER STAPLE — OBSERVATIONS

## Photo Condition & Quality:

Macro image is sharp and evenly lit; staple and surrounding paper fully visible.



## Observations:

- Metal staple is present and embedded.
- **Surface oxidation** visible as darkened areas on the staple metal.
- Surrounding paper is intact with no tearing or slot enlargement.

## Overall Impression:

Upper staple remains **structurally sound with surface-level oxidation only.**

---

## LOWER STAPLE — OBSERVATIONS

### Photo Condition & Quality:

Macro image is clear, evenly lit, and properly framed.



### Observations:

- Metal staple is present and embedded.
- Oxidation comparable to the upper staple.
- No surrounding paper damage or slot enlargement observed.

### Overall Impression:

Lower staple remains **structurally sound with surface-level oxidation only.**

---

# BRITTLINESS TEST — OBSERVATIONS

## Photo Condition & Quality:

Image shows a **single interior page lifted above flat underlying pages**. Slight softness at the extreme corner does not impede evaluation of bend behavior.



## Observations (confined to the lifted page):

- The lifted page bends upward in a **smooth, shallow arc**.
- No visible fiber fracture, splitting, or flaking along the bend line.
- Paper surface appears continuous at the point of flex.

## Overall Impression:

The tested page demonstrates **retained flexibility** and does **not exhibit brittle behavior** under the observed flex.